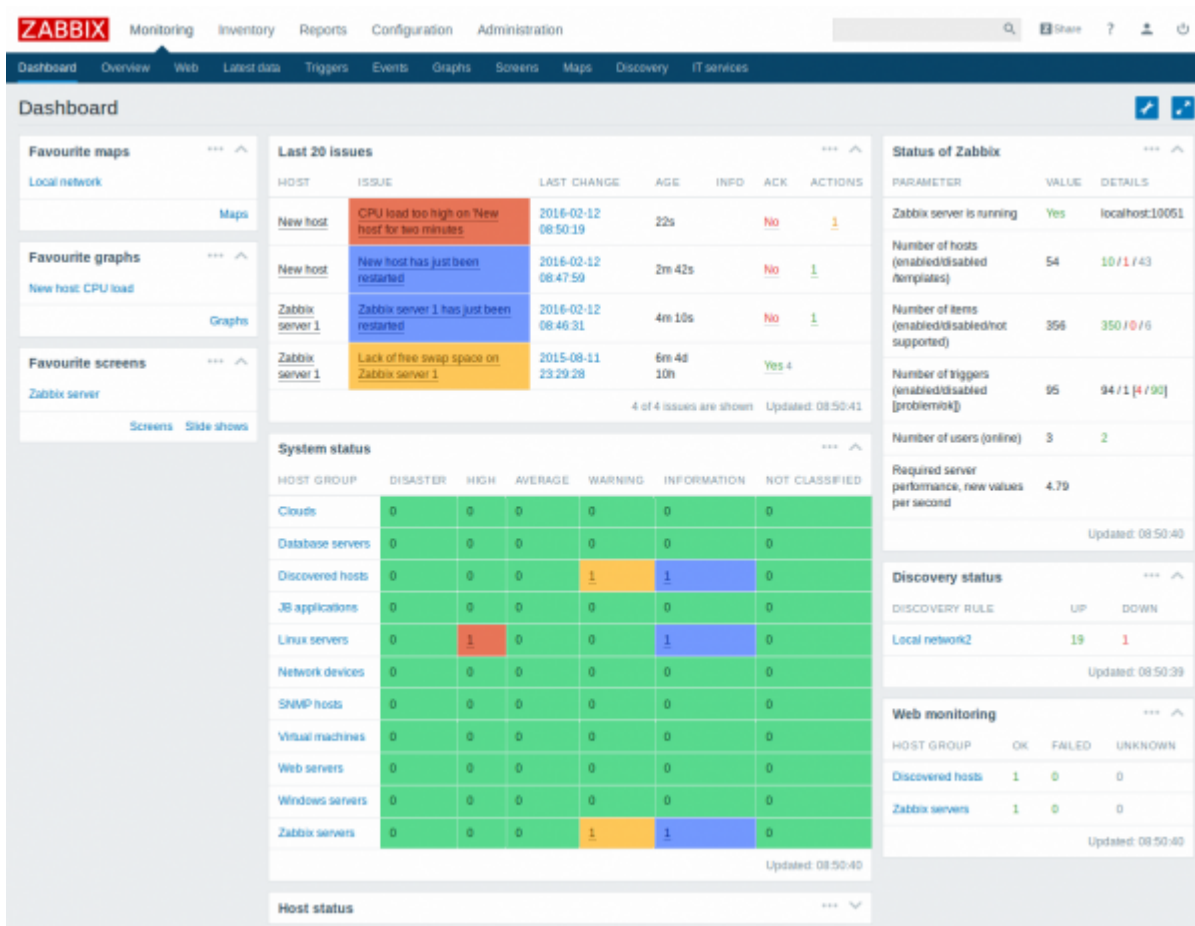


1 Dashboard

Overview

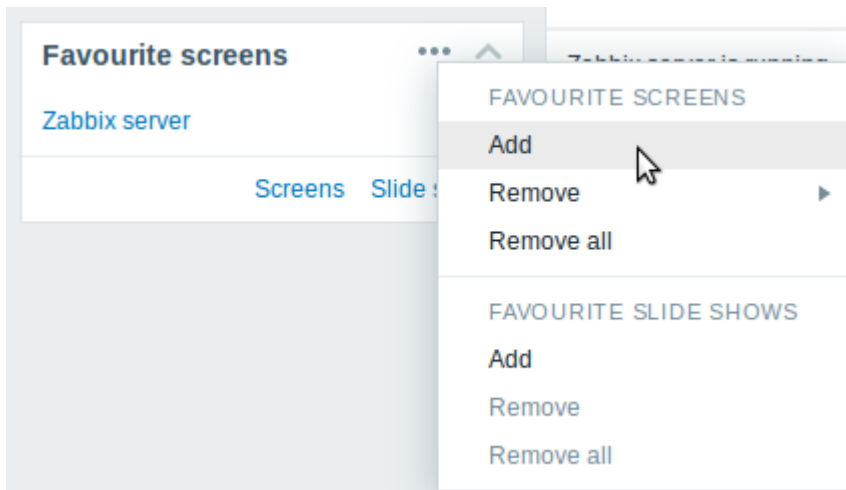
The *Monitoring* → *Dashboard* section, similar to the dashboard on your car, displays a summary of all the important information.



Favourites

There are some widgets for favourites where you can create quick shortcuts to the most needed graphs, custom graphs, screens, slide shows and maps.

Just click on the Menu button in the widget, select to add, for example, some screen and then select from the configured screens. The selected screens will be displayed as shortcuts in the favourites widget.




Status widgets

A number of status widgets - *Status of Zabbix*, *System status*, *Host status*, *Last 20 issues*, *Web monitoring*, *Discovery status* each display a summary of the respective data.

As you may have noticed from the screenshot, the widgets can be arranged in up to three columns. Additionally, all widgets can be freely moved around. Just grab a widget by its title bar, drag and drop wherever you would like it.

Dashboard filter

Clicking on  in the title bar allows you to access the dashboard filter.

Dashboard

Dashboard filter Enabled

Host groups Selected ▾

Show selected groups Select

Hide selected groups Select

Hosts Show hosts in maintenance

Triggers with severity

- Not classified
- Information
- Warning
- Average
- High
- Disaster

Trigger name


Problem display All Separated Unacknowledged only

Update
Cancel

By enabling the filter you can limit what hosts and triggers are displayed in the dashboard and define how the problem count is displayed.

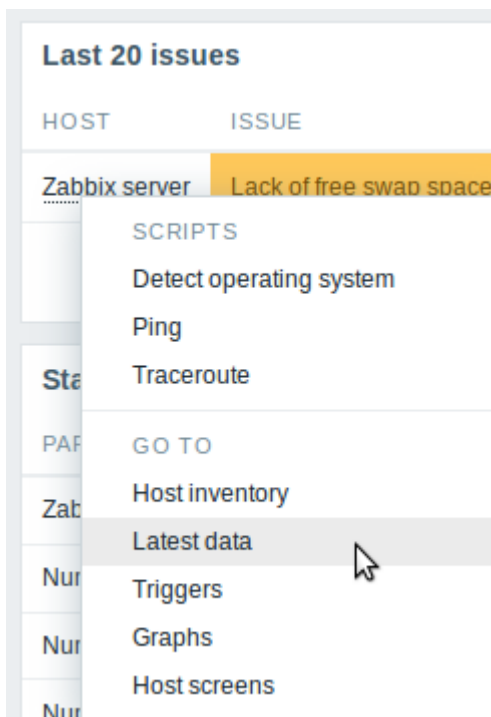
Parameter	Description
<i>Dashboard filter</i>	Click the link to enable/disable the dashboard filter.
<i>Host groups</i>	Select to display host data from: All - all host groups Selected - selected host groups.
<i>Show selected groups</i>	This field is available if <i>Selected</i> is chosen in the <i>Host groups</i> field. Enter host groups to display. This field is auto-complete so starting to type the name of a group will offer a dropdown of matching groups. Specifying a parent host group implicitly selects all nested host groups since Zabbix 3.2.2. In Zabbix 3.2.0, 3.2.1, nested host groups are selected if the parent group is specified by a parent <code>group/*</code> syntax. Host data from these host groups will be displayed in the Dashboard. If no host groups are entered, all host groups will be displayed.
<i>Hide selected groups</i>	This field is available if <i>Selected</i> is chosen in the <i>Host groups</i> field. Enter host groups to hide. This field is auto-complete so starting to type the name of a group will offer a dropdown of matching groups. Specifying a parent host group implicitly selects all nested host groups since Zabbix 3.2.2. In Zabbix 3.2.0, 3.2.1, nested host groups are selected if the parent group is specified by a parent <code>group/*</code> syntax. Host data from these host groups will not be displayed in the Dashboard. For example, hosts 001, 002, 003 may be in Group A and hosts 002, 003 in Group B as well. If we select to <i>show</i> Group A and <i>hide</i> Group B at the same time, only data from host 001 will be displayed in the Dashboard.
<i>Hosts</i>	Mark the <i>Show hosts in maintenance</i> option to display data from hosts in maintenance in the Dashboard.

Parameter	Description
Triggers with severity	Mark the trigger severities to be displayed in the Dashboard.
Trigger name like	Limit the number of triggers displayed in the <i>System status</i> , <i>Host status</i> and <i>Last 20 issues</i> widgets with this string.
Problem display	Display problem count as: All - full problem count will be displayed Separated - unacknowledged problem count will be displayed separated as a number of the total problem count Unacknowledged only - only the unacknowledged problem count will be displayed.

If dashboard filtering is applied, it is indicated by a green indicator with the filter icon: .

Host menu

Clicking on a host in the *Last 20 issues* widget brings up the host menu. It includes links to custom scripts, latest data, triggers, inventory, graphs and screens for the host.



The host menu is accessible by clicking on a host in several other frontend sections:

- Monitoring → [Problems](#)
- Monitoring → [Problems](#) → Event details
- Monitoring → [Overview](#) (on *Hosts: left*)
- Monitoring → [Latest data](#)
- Monitoring → [Triggers](#)
- Monitoring → [Screens](#) (in *Host issues* and *Host group issues* widgets)
- Monitoring → [Maps](#)
- Reports → [Triggers top 100](#)

Trigger event popup

Clicking on *Issue* in the *Last 20 issues* widget brings up the trigger event popup. It includes a list of events and, if defined, the trigger description and a clickable URL.

The screenshot shows a Zabbix dashboard widget titled "Last 20 issues". It contains a table with columns: HOST, ISSUE, LAST CHANGE, AGE, and INF. One row is highlighted in orange, showing "Zabbix server" as the host and "Lack of free swap space on Zabbix server" as the issue. A mouse cursor is clicking on the issue text, which has opened a popup window. The popup contains the text "It probably means that the system requires more physical memory." and a blue hyperlink "http://www.forensicswiki.org/wiki/Physical_memory". Below the popup, another part of the dashboard is visible, titled "Status of Zabbix", showing a table with columns: TIME, STATUS, DURATION, AGE, and ACK. One row shows a "PROBLEM" status at "2015-08-11 23:29:28" with a duration of "2m 11d 11h" and an acknowledgment of "Yes 4".

From: <https://www.zabbix.com/documentation/3.2/> - **Zabbix Documentation 3.2**

Permanent link: https://www.zabbix.com/documentation/3.2/manual/web_interface/frontend_sections/monitoring/dashboard

Last update: **2017/08/01 05:28**

